

# \$469,900

2850 Station House Way, Springboro



## thevenice lot 54

- 4 bedroom, 3 <sup>1</sup>/<sub>2</sub> baths
- Large kitchen with breakfast area that opens up to the Great Room
- Two Story Foyer
- **3 car garage**
- Master suite offers split vanities, corner soaker tub, tile shower & large walk-in closet
- Mud hall with bench seat

*springboro schools  
no city taxes!*



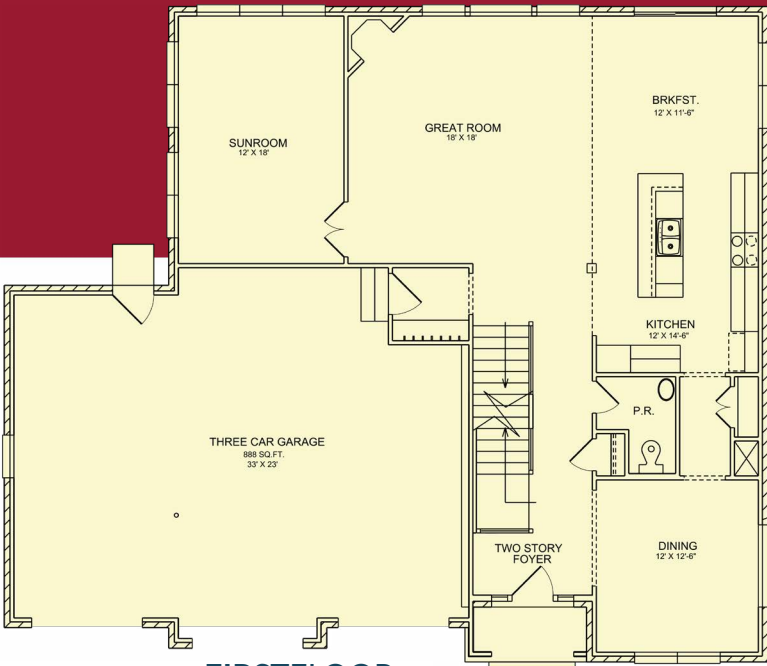
[angelaclark](#) (vice president of sales)

**phone** | (937) 438-3667

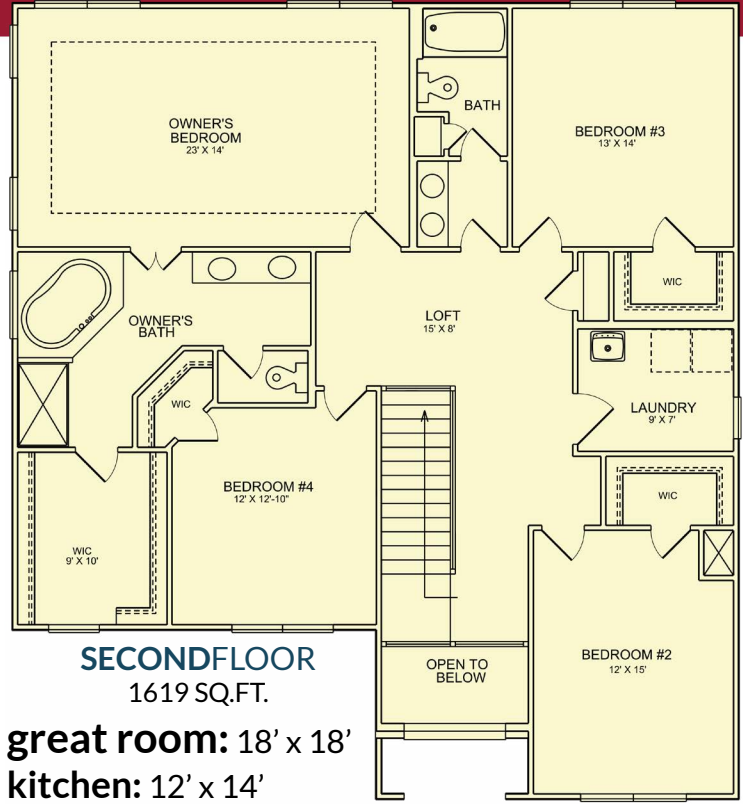
**email** | [clark@designhomesco.com](mailto:clark@designhomesco.com)

**web** | [www.designhomesco.com](http://www.designhomesco.com)

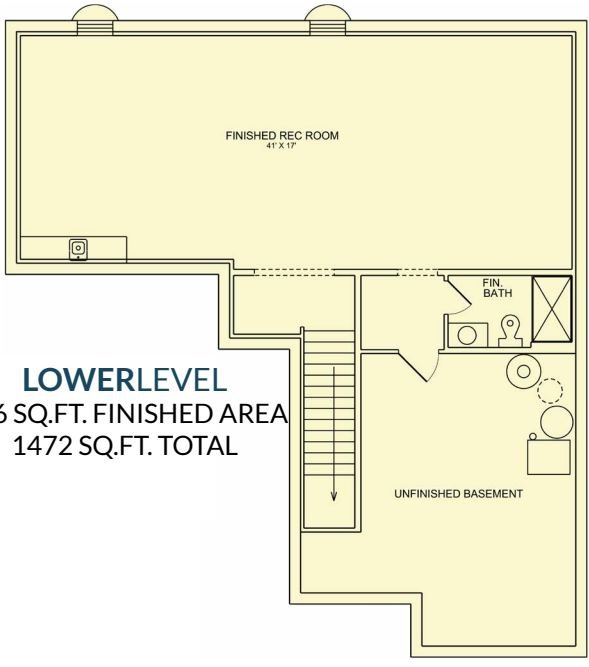




**FIRST FLOOR**  
1458 SQ.FT.



**SECOND FLOOR**  
1619 SQ.FT.



**LOWER LEVEL**  
886 SQ.FT. FINISHED AREA  
1472 SQ.FT. TOTAL

- dimensions**
- great room: 18' x 18'
  - kitchen: 12' x 14'
  - breakfast: 12' x 11'
  - dining room: 12' x 12'-6"
  - sunroom: 12' x 18'
  - owner's suite: 23' x 14' | walk-in closet 9' x 10'
  - bedroom 2: 12' x 15'
  - bedroom 3: 13' x 14'
  - bedroom 4: 12' x 12'-10"
  - loft: 15' x 8'
  - laundry: 9' x 7'
  - three car garage: 33' x 23'



**angelaclark** (vice president of sales)

phone | (937) 438-3667  
email | clark@designhomesco.com  
web | www.designhomesco.com

